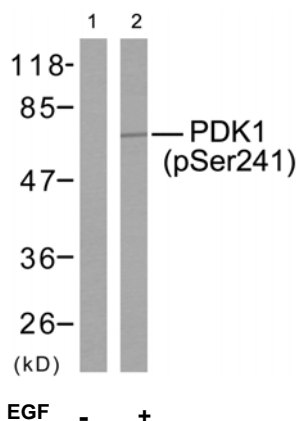


Rabbit anti PDK-1 (pSer241)

- Catalog Number:** pAP11005
Amount: 100µl (for 10 Western Blotting)
Form of Antibody: Rabbit IgG in phosphate buffered saline (without Mg^{2+} and Ca^{2+}), pH 7.4, 150mM NaCl, 0.02% sodium azide and 50% glycerol.
Storage/Stability: Store at -20°C/1 year
Immunogen: The antiserum was produced against synthesized phosphopeptide derived from human PDK1 around the phosphorylation site of serine 241 (A-N-S^P-F-V).
Purification: The antibody was affinity-purified from rabbit antiserum by affinity-chromatography using epitope-specific phosphopeptide. The antibody against non-phosphopeptide was removed by chromatography using non-phosphopeptide corresponding to the phosphorylation site.
Specificity/Sensitivity: PDK1 (phospho-Ser241) antibody detects endogenous levels of PDK1 only when phosphorylated at serine 241.
Reactivity: Human, Mouse, Rat
Applications: WB: 1:1000
Swiss-Prot No. : O15530
References: Scheid MP, et al. (2005) Mol Cell Biol; 25(6): 2347-63
Chen H, et al. (2001) Biochemistry; 40(39): 11851-9
Sato S, et al. (2002) J Biol Chem; 277(42): 39360-7
Lim MA, et al. (2003) Proc Natl Acad Sci U S A; 100(24): 14006-11



Western blot analysis of extracts from MDA-MB-435 cells using PDK1 (phospho-Ser241) (pAP11005)

For Research Use Only

Contact & Ordering Information: Angio-Proteomie, 11 Park Drive, Suite 12, Boston, MA 02215, USA. Fax: (480) 247-4337, angioproteomie@gmail.com